



**e-Parcel Client Software**  
**Download & Installation Manual**  
**e-Parcel VCN-CommCenter 7.0**


**February, 2019**

**e-Parcel Corporation**





## System Requirements


### System Requirements for e-Parcel VCN-CommCenter 7.0

 Microsoft Windows 2000 Server or better / XP or better  
32bit or 64bit  
\*Display languages on the VCN-CommCenter GUI are below.  
[Japanese, English, French, German, Spanish, Chinese-simplified,  
Chainese-traditional]

 Internet Connection

 Web Browser.....Internet Explorer 6.0 over must be required

 64 MB over RAM for the client software

 15 MB Disk Space for the installation

(plus additional space for attachments and delivered Items.)

\*We recommend the Internet Explorer near the latest version,  
and the memory and the disk space as much as possible to use it  
comfortably.

# Install Client Digital Certificate

1. After logging to the Windows by the logon user who will actually use the VCN-CommCenter, access the following URL site.  
<https://www.e-parcel.ne.jp/epvcn/>

2. ①Click Download & Install Software menu.

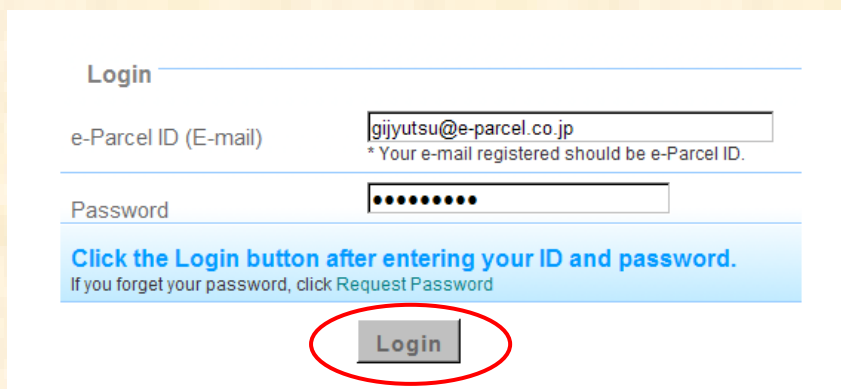


②Click Download e-Parcel Software button at the bottom of the page.



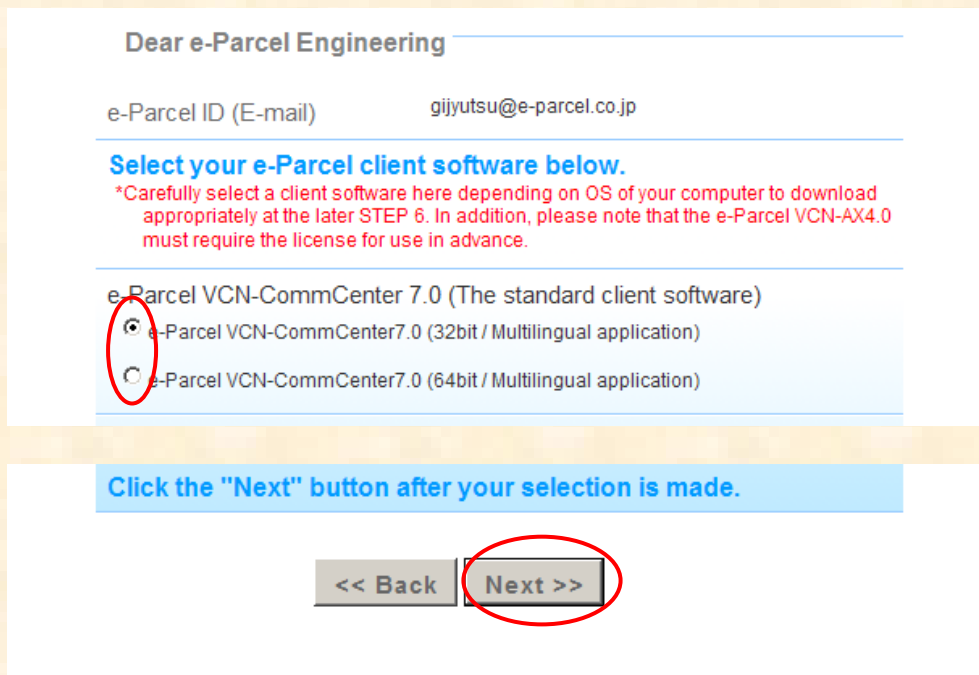
3. [STEP1]

Enter your e-Parcel ID & default password you are informed and then click Login button.



[STEP2]

Select e-Parcel VCN-CommCenter7.0 based on your Windows OS bit version (32bit or 64bit).



[STEP3]

Follow the procedures indicated to check the security of this web site and then click Next button.



[STEP4]

Download & install a client digital certificate.

**STEP4. Download and install a client digital certificate.**

1. To download a client digital certificate, click the Download button below.
2. To install it, follow the procedure for the installation of client digital certificate.
3. When the installation is done, click the Next button.

**Download Now !**

\*The "Auto Setup" function of e-Parcel software will attempt to automatically detect a client digital certificate and your network settings from Windows (IE). Therefore, the "Auto Setup" function will only be enabled once a client digital certificate has been installed on Windows (IE). [This web site will guide you to the installation procedures accessing Windows Internet Explorer \(IE\) as your web browser.](#) (If you wish to access Firefox as web browser, please contact the e-Parcel Customer Support (support@e-parcel.co.jp) by e-mail. The different procedures will be shown such as setup software manually.)

**Download**

Follow the procedure indicated on the page to install a client digital certificate.

- Caution 1) In the case of Windows 10, select "Current User" as Store Location on the Welcome to the Certificate Import Wizard window.
- Caution 2) Enter a default password you are informed on the way. **Also, make sure to place a check mark at the head of "Mark this key as exportable...."** After the installation, Click Next button.

**Completed Installation**

**Click the "Next" button.**

Proceed the STEP5. Access the URL of e-Parcel Secure Enterprise - Web Browser and change password.

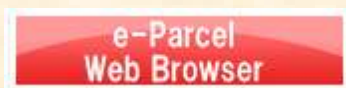
\* To access the URL at STEP5, it must be required to appropriately complete installing a client digital certificate.

\* For users of e-Parcel Secure Enterprise - Software (VCN-CommCenter7.0, VCN-AX4.0): To check your installation, you must access the e-Parcel Secure Enterprise - Web Browser on the web site, even you are software users.

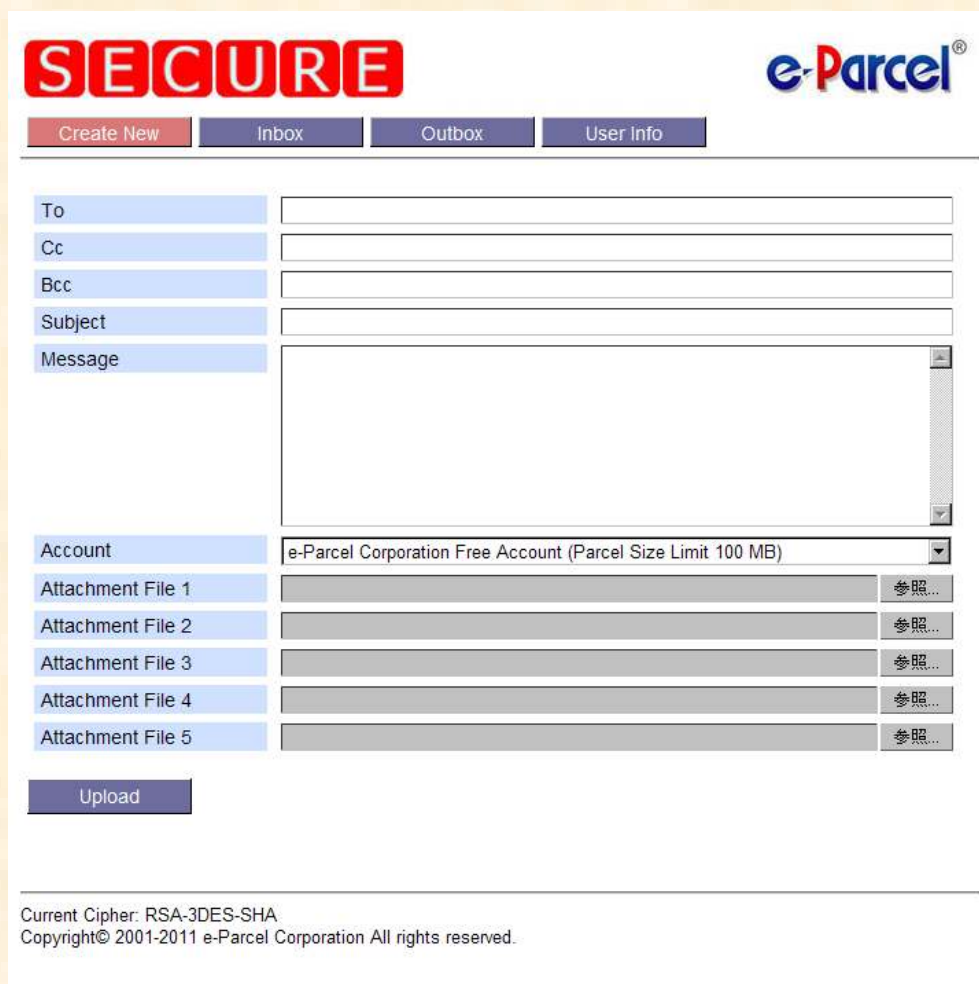
**<< Back** **Next >>**

[STEP5]

Click e-Parcel Web Browser button on the page.

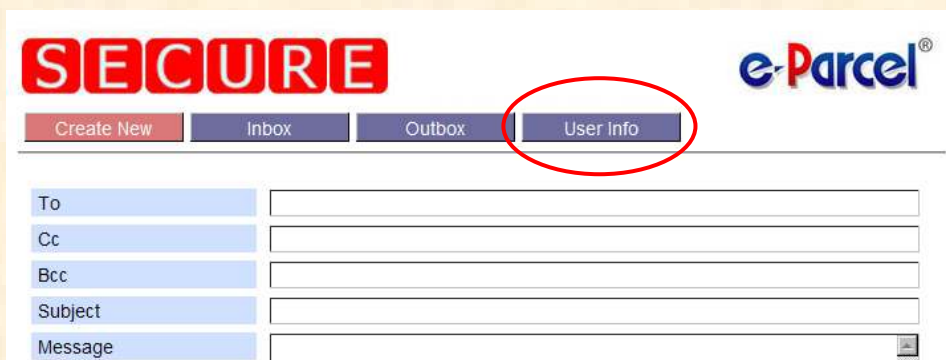


The select digital certificate window appears. Click appropriate certificate on its window and then the another browser window of e-Parcel Secure Enterprise - Web Browser appears.

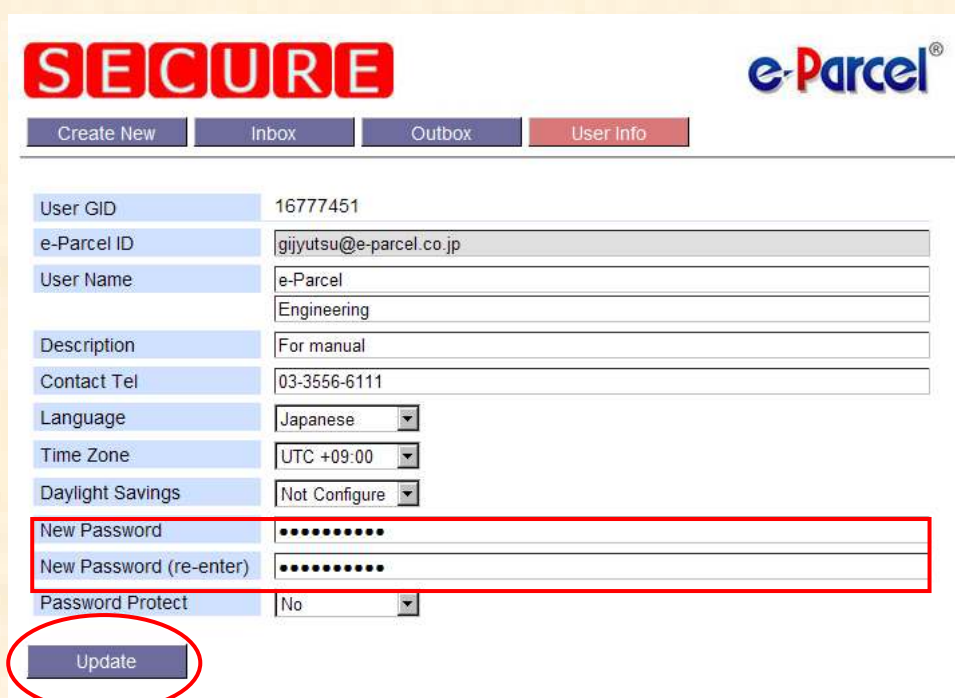
The screenshot shows the "SECURE" web browser interface. At the top left is the word "SECURE" in large, bold, red letters. To the right is the "e-Parcel" logo. Below the logo are four navigation buttons: "Create New" (red), "Inbox" (dark blue), "Outbox" (dark blue), and "User Info" (dark blue). The main area contains several input fields: "To", "Cc", "Bcc", "Subject", and "Message" (a large text area). Below these is an "Account" dropdown menu showing "e-Parcel Corporation Free Account (Parcel Size Limit 100 MB)". There are five "Attachment File" rows, each with a grey box and a "参照..." button. At the bottom left is an "Upload" button. At the very bottom, there is a footer with the text: "Current Cipher: RSA-3DES-SHA Copyright© 2001-2011 e-Parcel Corporation All rights reserved."

# Change the password

1. Click User Info button.



2. Configure new password on New Paaword line and New Password (re-enter) line. The password should be set by alphabet letters and figure mixture, and the number of letters should be over 6 characters and within 20 characters. The password of only the alphabet or only the figure is irrelevant. Finally, click Update button.



You can find the OK for Process Result.

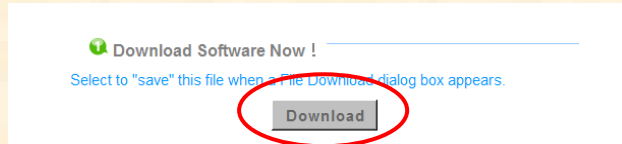


This window means that the change of your password is completed.  
Back on first browser and then click Next button to move [STEP6].



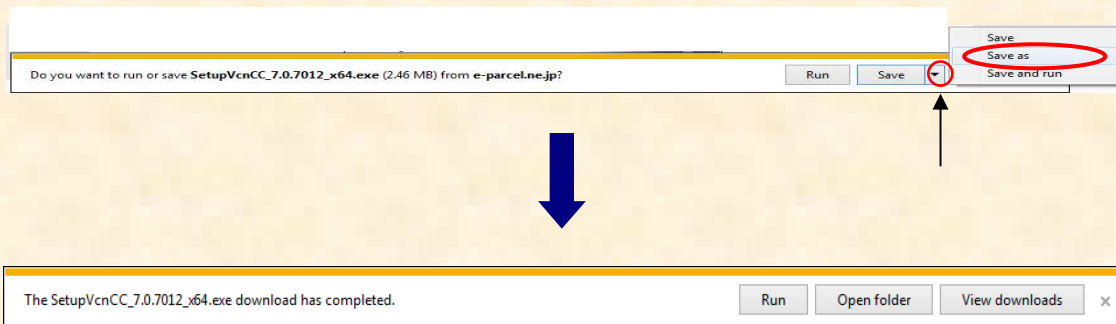
# Download the e-Parcel VCN-Commcenter 7.0

1. Click Download button on the page of [STEP6] to start downloading the e-Parcel VCN-CommCenter 7.0.

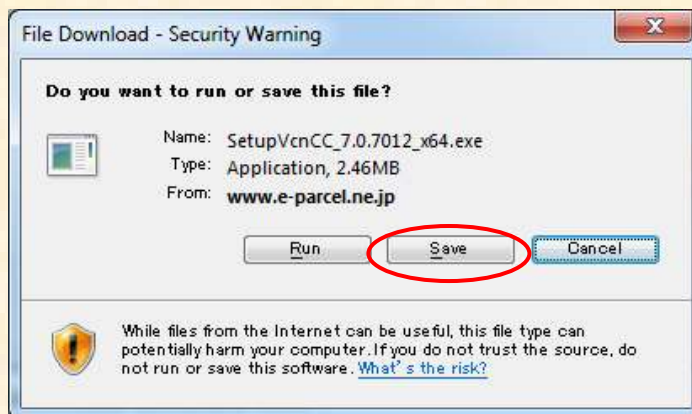


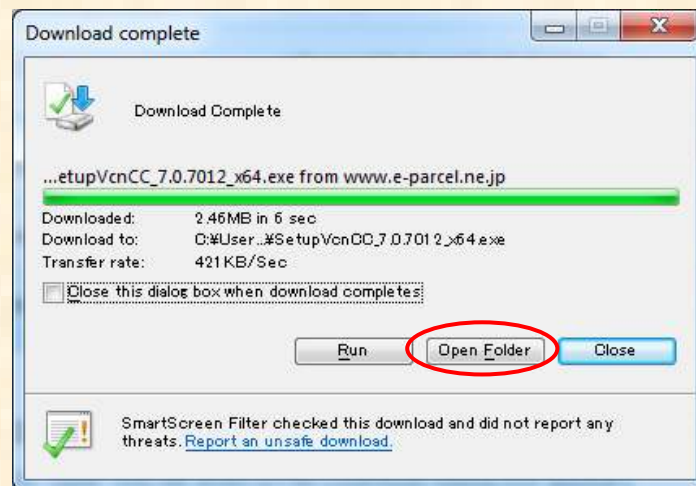
2. A notification bar or a dialog box appears. Perform saving the installer to the location that would be convenient.

(In case of a notification bar)



(In case of a dialog box)





Now, you have an installer to install the e-Parcel VCN-CommCenter 7.0. Then, let's start installing it.

You will need an administrator right to install the e-Parcel VCN-CommCenter 7.0. If you are logging to your Windows as the general user now, perform the following action before the installation.

For Windows 2000, XP, and 2003 users, logon with an administrator right. For Windows Vista, 2008, 7, 8, 2012 and 10 users, prepare an administrator's logon ID & his own password or logon with an administrator right.

# Install the e-Parcel VCN-CommCenter 7.0

1. Double-click the installer of the e-Parcel VCN-CommCenter 7.0.

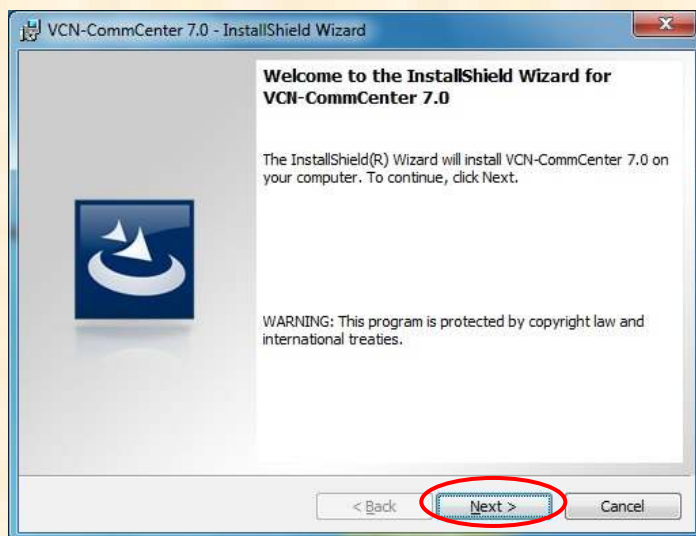


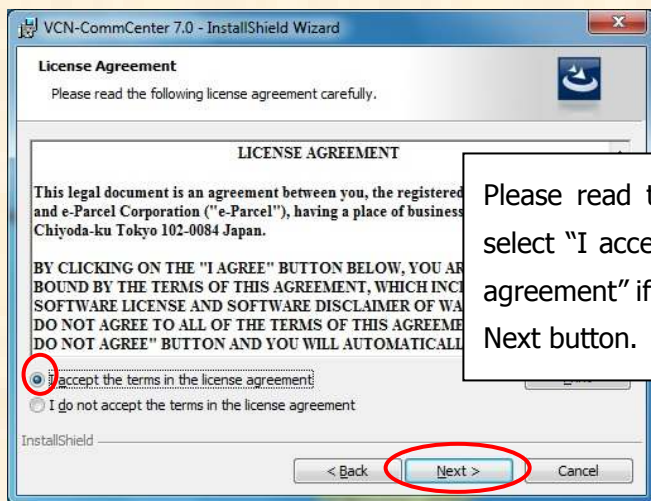
If Open File – Security Warning Window is Opened after double-clicking this file, please click Run button to start installing the e-Parcel VCN-CommCenter 7.0.

2. You can start installing the e-Parcel VCN-CommCenter 7.0. Proceed to install it according to the following pictures.

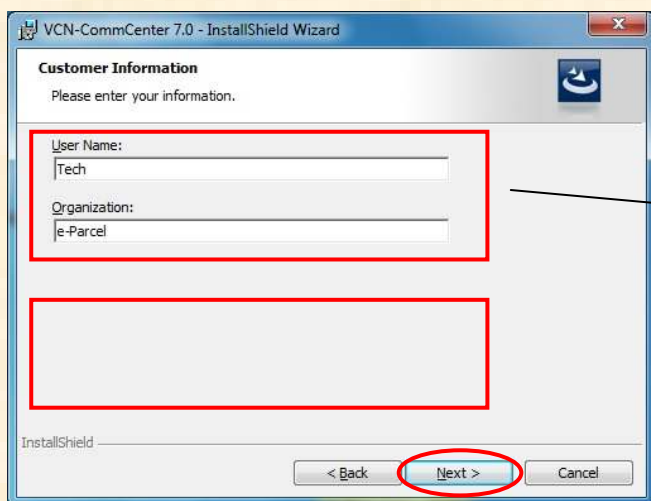


Click OK button after you select a language for the installation.





Please read the license agreement and select "I accept the terms in the license agreement" if you agree it. And then click Next button.



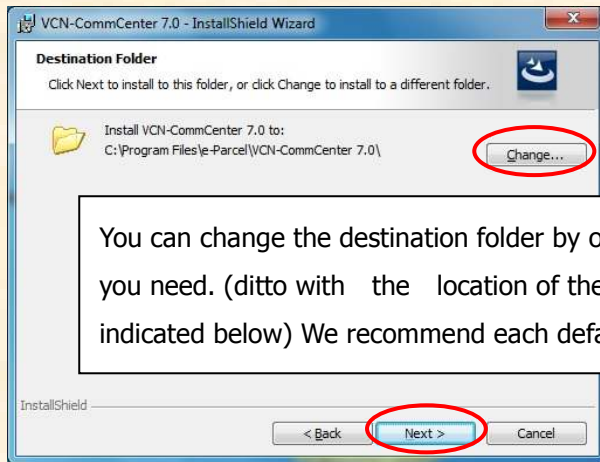
The user information configured on Windows is automatically indicated.

In case of Windows 2000, XP and 2003, the following alternative is Indicated in this space.

Install this application for:

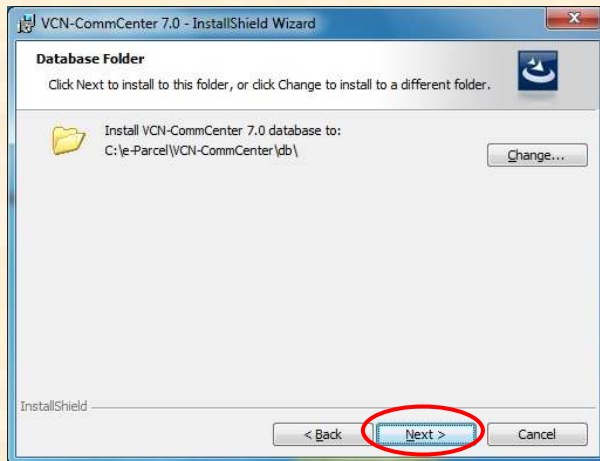
1. Anyone who uses this computer (all users)
2. Only for me (User Name)

### Specify the folder in which to install.

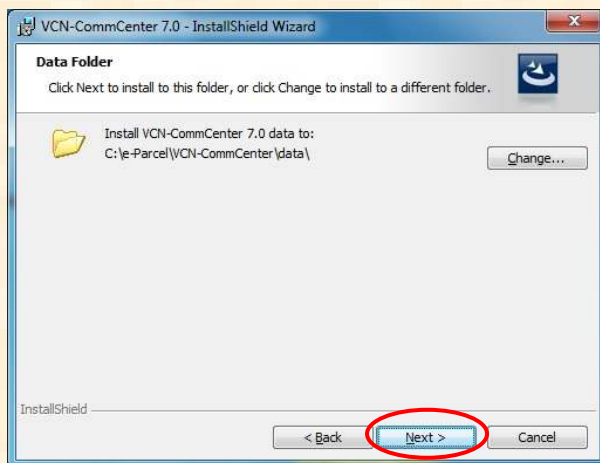


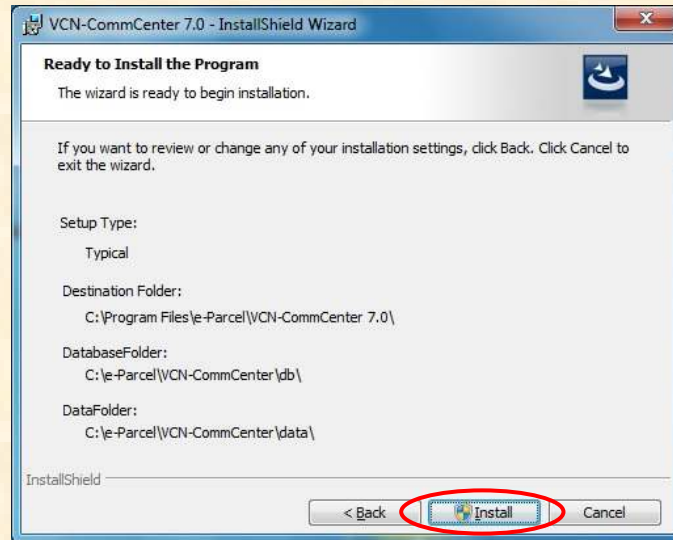
You can change the destination folder by operating from Change button if you need. (ditto with the location of the database folder and data folder indicated below) We recommend each default location if it is no problem.

### Specify the database folder.



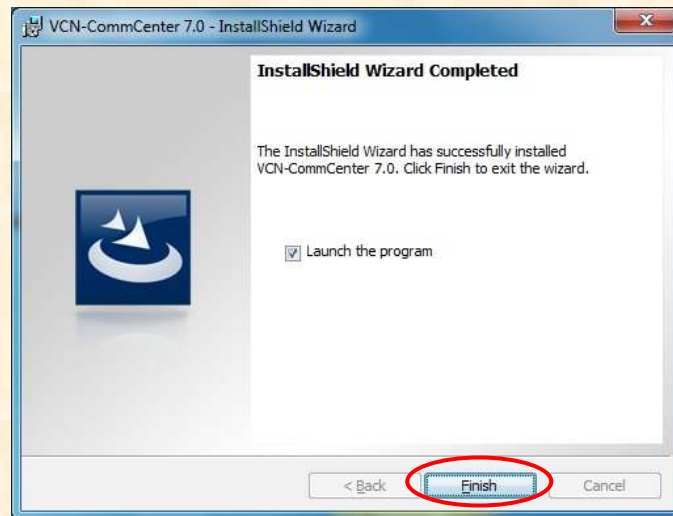
### Specify the data folder.



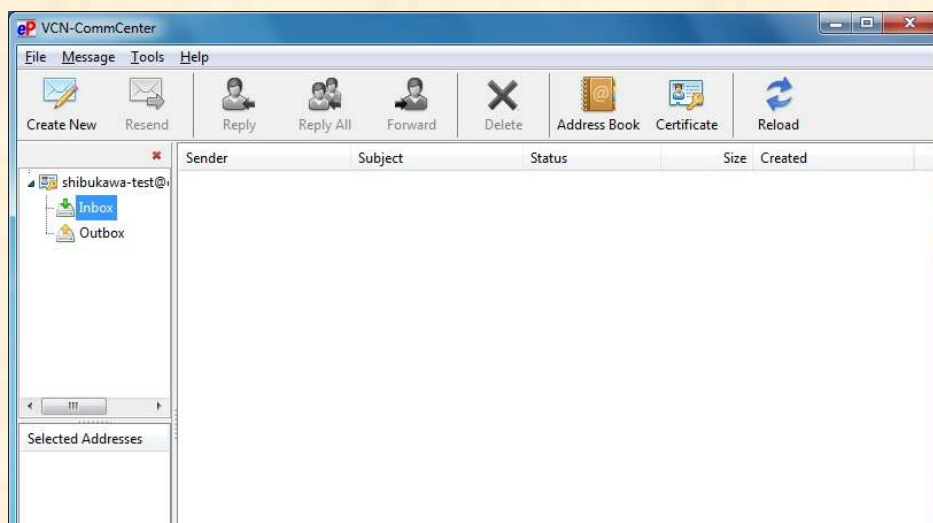


In case of Windows Vista, 2008, 7, 8, 2012 and 10, the UAC window appears on the way. Please enter your administrator ID and the password. If you logon to windows as your administrator group user, please select Permit or Yes button. (In case of Windows 2000, XP and 2003, the UAC window does not appear.)





In the last installation stage, InstallShield Wizard Completed window appears. Please click Finish button. After a while, the VCN-CommCenter 7.0 starts.



The window that prompt you to enter your proxy authentication ID and your password may be appeared depending on your company's network environments. If so, please enter them and click OK button.

**e-Parcel Client Software  
Download & Installation Manual  
e-Parcel VCN-CommCenter 7.0**

February, 2019 Version 8.0

e-Parcel and e-Parcel Logo are trademarks of e-Parcel Corporation  
Copyright © e-Parcel Corporation. All rights reserved.

This document is intended for the sole use of e-Parcel and e-Parcel clients only. Confidential and proprietary information is contained and should not be copied and/or distributed without the express written consent of e-Parcel Corporation.

Microsoft, Windows, Office are trademarks of Microsoft Corporation.

Adobe, Acrobat are trademarks of Adobe Systems Inc.

**Contact us:** e-Parcel Customer Support

E-mail: [support@e-parcel.co.jp](mailto:support@e-parcel.co.jp)

<http://www.e-parcel.co.jp/>